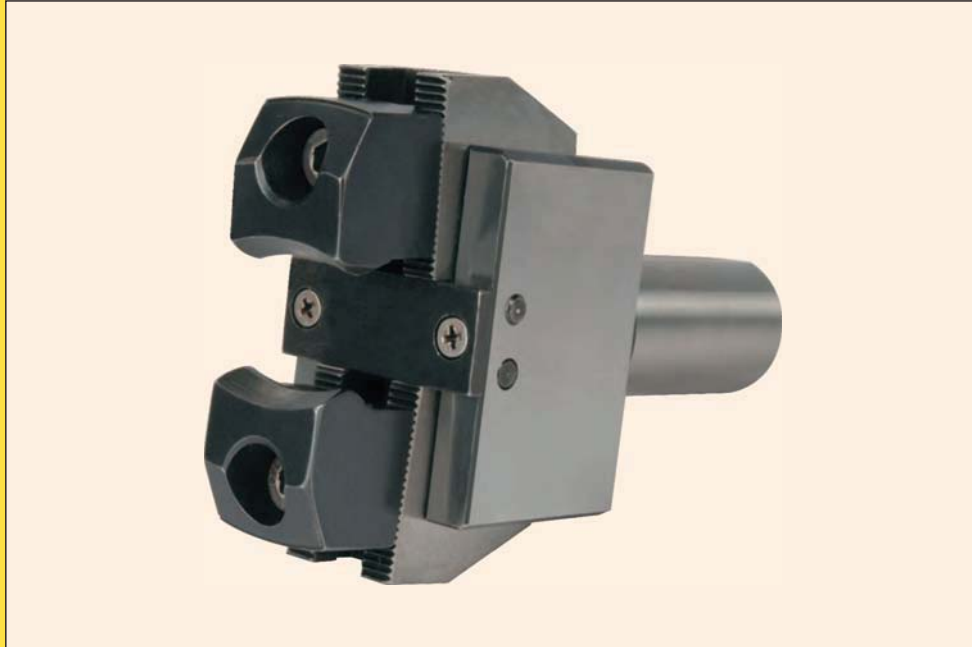




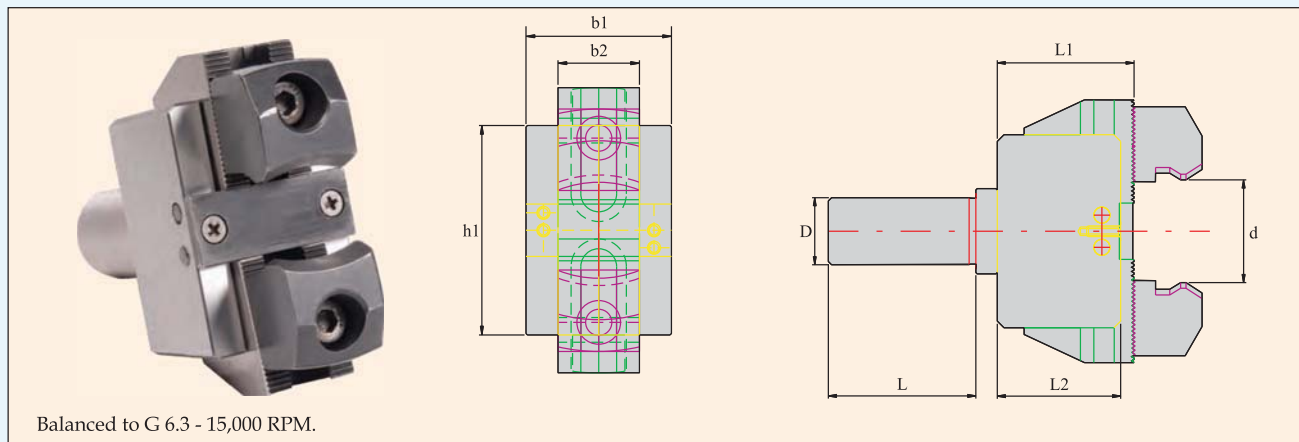
BAR PULLERS (FOR CNC LATHES)



FEATURES:

- 'KTA' BAR PULLER is unique with bar pulling capacity from 6.0 mm to 50.0 mm.
- This occupies only one station in the Turret.
- This is very good for small to medium sizes batch production.
- In many cases you can avoid bar feeders which occupies lot of space.
- This is available in standard cylindrical dia. 20, 25, 32, & 40 as per Din 1835 B+E (VDI & spl mounting on request).
- Please go through the schematic diagram which shows the simplicity of the holder function.
- Most suitable for CNC Lathes; CNC Turn - Mill Centers.

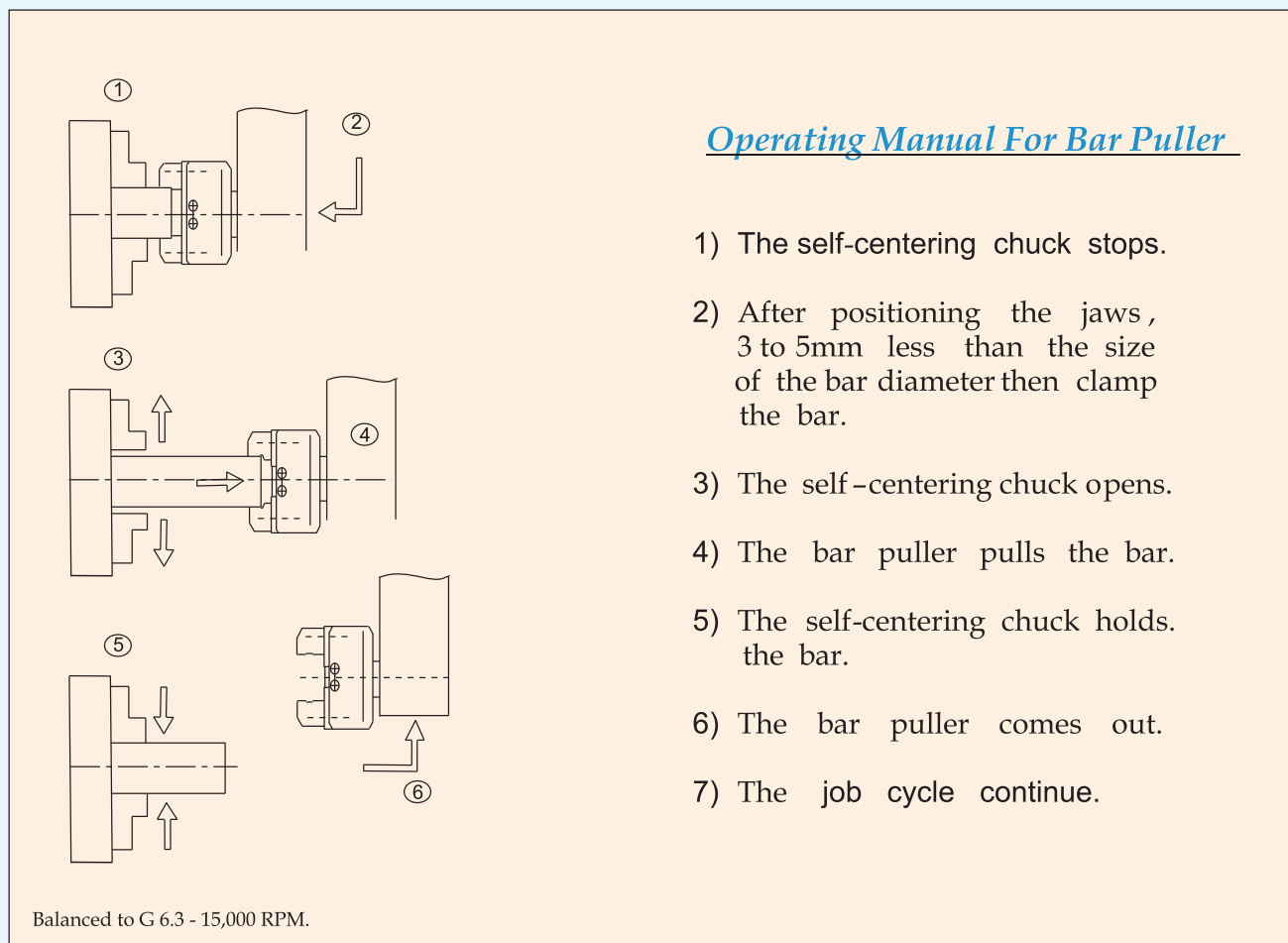
BAR PULLER



Balanced to G 6.3 - 15,000 RPM.

BAR PULLER	d	D	L	L1	L2	b1	b2	h1
DIA.25 BAR PULLER	6-50	25	55	51	46	50	28	72
DIA.32 BAR PULLER	6-50	32	55	51	46	50	28	72

'D': DIFFERENT SHANKS LIKE DIA40, VDI30, VDI40, & ANY SPECIALS POSSIBLE.



Operating Manual For Bar Puller

- 1) The self-centering chuck stops.
- 2) After positioning the jaws , 3 to 5mm less than the size of the bar diameter then clamp the bar.
- 3) The self-centering chuck opens.
- 4) The bar puller pulls the bar.
- 5) The self-centering chuck holds the bar.
- 6) The bar puller comes out.
- 7) The job cycle continue.

Balanced to G 6.3 - 15,000 RPM.